

TECHNICAL DATA SUBMERSIBLE MOTOR 60 Hz 6" WF STANDARD

6 INCH/1 PHASE WATER FILLED MOTOR

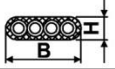
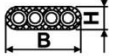
Type	Pn [hp]	S.F	Un (Volts)	Thrust Load (N)	In	Istart/In	RPM	Efficiency [%]	Cos φ (P.F)	TN (Nm)	Length (L) (inch)	Gross weight (lbs.)
					[Amps]	F.L		F.L				
M6-050-230-1	5.00	1.15	230	15500	23.1	6.90	3500	74.0	0.94	10.10	22.6	113.5
M6-075-230-1	7.50	1.15	230	15500	33.9	6.85	3500	75.0	0.94	15.01	23.1	121.3
M6-100-230-1	10.0	1.15	230	15500	44.7	6.70	3500	76.0	0.96	20.47	26.2	125.7
M6-150-230-1	15.0	1.15	230	15500	63.9	6.75	3500	78.0	0.96	30.02	29.3	141.1

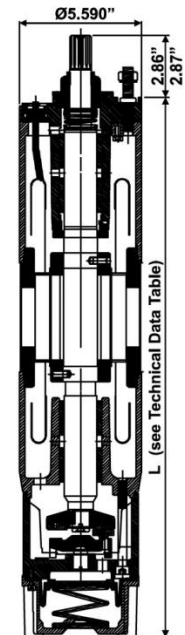
6 INCH/3 PHASE WATER FILLED MOTOR

Type	Pn [hp]	S.F	Un (Volts)	Thrust Load (N)	In	Istart/In	RPM	Efficiency [%]	Cos φ (P.F)	TN (Nm)	Length (L) (inch)	Gross weight (lbs.)
					[Amps]	F.L		F.L				
M6-050-230	5.00	1.15	230	27500	14.9	5.30	3480	77.0	0.81	10.98	26.7	110.2
M6-050-460	5.00	1.15	460	27500	7.4	4.63	3500	78.0	0.80	10.92	26.7	110.2
M6-075-230	7.50	1.15	230	27500	21.3	5.30	3480	79.0	0.82	15.10	27.9	114.6
M6-075-460	7.50	1.15	460	27500	10.7	4.72	3500	79.0	0.82	15.00	27.9	114.6
M6-100-230	10.0	1.15	230	27500	28.4	5.40	3480	80.0	0.83	20.59	29.8	125.7
M6-100-460	10.0	1.15	460	27500	14.3	5.06	3500	80.0	0.82	20.47	29.8	125.7
M6-150-230	15.0	1.15	230	27500	40.6	5.60	3480	81.0	0.84	30.20	34.0	149.9
M6-150-460	15.0	1.15	460	27500	20.3	5.26	3500	82.0	0.83	30.00	34.0	149.9
M6-200-230	20.0	1.15	230	27500	53.4	5.65	3480	83.0	0.85	41.18	37.9	174.2
M6-200-460	20.0	1.15	460	27500	27.0	5.38	3500	83.0	0.84	40.95	37.9	174.2
M6-250-230	25.0	1.15	230	27500	65.0	5.66	3480	84.0	0.85	50.79	40.3	213.9
M6-250-460	25.0	1.15	460	27500	32.9	5.69	3500	84.0	0.84	50.50	40.3	213.9
M6-300-230	30.0	1.15	230	27500	76.4	5.60	3480	85.0	0.85	60.40	42.6	231.5
M6-300-460	30.0	1.15	460	27500	39.1	5.80	3500	84.0	0.84	60.00	42.6	231.5
M6-400-460	40.0	1.15	460	27500	52.1	6.19	3500	85.0	0.85	81.90	47.8	269.0
M6-500-460	50.0	1.15	460	27500	64.3	5.62	3500	85.0	0.85	101.0	51.7	291.0
M6-600-460	60.0	1.15	460	27500	78.2	5.64	3500	85.0	0.85	122.8	55.6	313.0

NOTE: PT100 sensor can be provided on request.

CABLE DATA

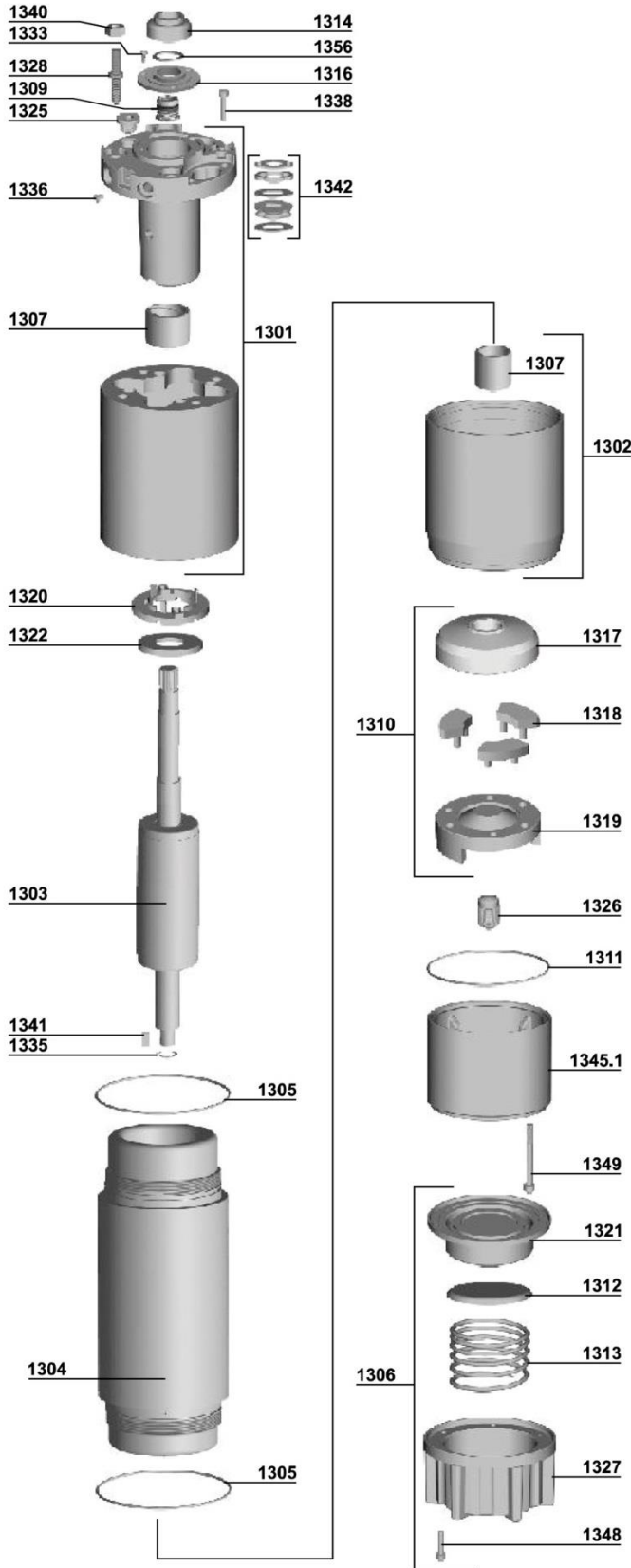
HP	ph	Type of start	Cable x Leads x Size (AWG)	Length [ft]	H x B [inch]	
5 - 15	1	DOL	1 x 4 x 10	13.0	0.31 x 0.96	
5 - 60	3	DOL	1 x 4 x 10	13.0	0.31 x 0.96	



CONSTRUCTION

SUBMERSIBLE MOTOR 60 Hz

6" WF STANDARD



MATERIALS

PART NO.	PARTS NAME	MATERIAL
1301	UPPER BEARING HOUSING (COMPLETE)	-
1302	LOWER BEARING HOUSING (COMPLETE)	-
1303	ROTOR	STAINLESS STEEL
1304	STATOR	STAINLESS STEEL
1305	'O' RING	NBR
1306	MOTOR BASE (COMPLETE)	-
1307	BEARING BUSH (38 X 50 X 40) MM	CARBON
1309	MECHANICAL SEAL	SIC / SIC / NBR
1310	THRUST BEARING SET (SIX SEGMENT)	CARBON V/S S.S.
1311	'O' RING	NBR
1312	DIAPHRAGM SUPPORT	STAINLESS STEEL
1313	SPRING	STAINLESS STEEL
1314	SAND GUARD	NBR
1316	SEAL GUARD	STAINLESS STEEL
1317	THRUST DISC WITH CARBON	PU COATED GREY IRON
1318	THRUST SEGMENT PIECE	STAINLESS STEEL
1319	THRUST BEARING BASE	PU COATED GREY IRON
1320	COUNTER RING	FIBER
1321	DIAPHRAGM	NBR
1322	THRUST WASHER	STEEL
1325	WATER PLUG WITH 'O' RING	BRONZE
1326	BEARING SUPPORT	STAINLESS STEEL
1327	MOTOR BASE	PU COATED GREY IRON
1328	COUPLE STUD	STAINLESS STEEL
1333	SCREW FOR SEAL GUARD	STAINLESS STEEL
1335	CIRCLIP	SPRING STEEL
1336	EARTHING PIN	STAINLESS STEEL
1338	ALLEN PIN	STAINLESS STEEL
1340	NUT FOR COUPLE STUD	STAINLESS STEEL
1341	KEY	STAINLESS STEEL
1342	CABLE KIT	-
1345.1	BEARING HOUSING	PU COATED GREY IRON
1348	ALLEN PIN	STAINLESS STEEL
1349	ALLEN PIN	STAINLESS STEEL
1356	WASHER	TEFLON

ORDERING NOTE:

While ordering spare parts kindly mention motor type, part no, part name, material & quantity in the order.