

4 INCH/1 PHASE, 2 WIRE OIL FILLED MOTOR, 3450 RPM

Type	Pn		Un (Volts)	Hz	S.F	Thrust Load (N)	Full load		Maximum (S.F load)		Efficiency [%]		Cos φ (P.F)		Locked rotor Amps	KVA code	Length (L) (inch)	Gross weight (lbs.)
	[hp]	[kW]					Amps	Watts	Amps	Watts	S.F	F.L	S.F	F.L				
M4-005-115-2W	0.50	0.37	115	60	1.6	1500	9.5	670	11.9	960	62.0	56.0	0.70	0.61	40.0	R	15.4	22.8
M4-005-230-2W	0.50	0.37	230	60	1.6	1500	5.0	670	6.0	960	62.0	56.0	0.70	0.60	30.0	R	15.4	22.8
M4-007-230-2W	0.75	0.55	230	60	1.5	1500	6.8	940	8.0	1310	64.0	59.0	0.81	0.60	42.0	N	16.4	24.5
M4-010-230-2W	1.00	0.75	230	60	1.4	1500	8.2	1210	9.8	1600	65.0	62.0	0.70	0.64	45.0	N	17.0	26.2
M4-015-230-2W	1.50	1.10	230	60	1.3	1500	10.6	1700	13.1	2180	67.0	66.0	0.72	0.69	50.0	M	20.7	30.7

4 INCH/1 PHASE, 3 WIRE OIL FILLED MOTOR WITH QD CONTROL BOX, 3450 RPM

Type	Pn		Un (Volts)	Hz	S.F	Thrust Load (N)	Full load		Maximum (S.F load)		Efficiency [%]		Cos φ (P.F)		Locked rotor Amps	KVA code	Length (L) (inch)	Gross weight (lbs.)
	[hp]	[kW]					Amps	Watts	Amps	Watts	S.F	F.L	S.F	F.L				
M4-005-115-3W	0.50	0.37	115	60	1.6	1500	10.0	670	12.0	960	62.0	56.0	0.69	0.58	50.0	M	16.4	24.5
M4-005-230-3W	0.50	0.37	230	60	1.6	1500	5.0	670	6.0	960	62.0	56.0	0.70	0.58	23.0	M	16.4	24.5
M4-007-230-3W	0.75	0.55	230	60	1.5	1500	6.8	940	8.0	1310	64.0	59.0	0.71	0.60	34.2	M	17.5	26.2
M4-010-230-3W	1.00	0.75	230	60	1.4	1500	8.2	1210	9.8	1600	65.0	62.0	0.71	0.64	41.5	L	18.6	30.7

4 INCH/1 PHASE, 3 WIRE OIL FILLED MOTOR WITH CSCR CONTROL BOX, 3450 RPM

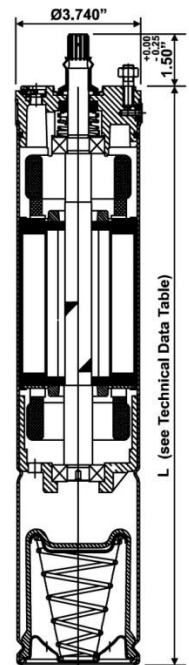
Type	Pn		Un (Volts)	Hz	S.F	Thrust Load (N)	Full load		Maximum (S.F load)		Efficiency [%]		Cos φ (P.F)		Locked rotor Amps	KVA code	Length (L) (inch)	Gross weight (lbs.)
	[hp]	[kW]					Amps	Watts	Amps	Watts	S.F	F.L	S.F	F.L				
M4-005-230-3W	0.50	0.37	230	60	1.6	1500	3.5	655	4.3	890	67.0	57.0	0.90	0.81	25.0	M	16.4	24.5
M4-007-230-3W	0.75	0.55	230	60	1.5	1500	4.8	925	5.8	1210	69.0	60.0	0.90	0.84	36.0	M	17.5	26.2
M4-010-230-3W	1.00	0.75	230	60	1.4	1500	6.0	1160	7.0	1490	70.0	64.0	0.92	0.86	42.0	L	18.6	30.7
M4-015-230-3W	1.50	1.10	230	60	1.3	1500	9.5	1640	10.9	2070	69.0	67.0	0.82	0.74	53.0	J	20.2	34.2
M4-020-230-3W	2.00	1.50	230	60	1.25	1500	10.0	2060	12.0	2610	71.0	73.0	0.95	0.89	55.0	G	22.5	42.9
M4-030-230-3W	3.00	2.20	230	60	1.15	2500	13.2	2910	15.0	3300	77.0	76.0	0.96	0.96	85.0	H	22.5	42.9
M4-050-230-3W	5.00	3.70	230	60	1.15	2500	22.0	4920	25.0	5620	76.0	76.0	1.00	1.00	125.0	F	28.4	57.9

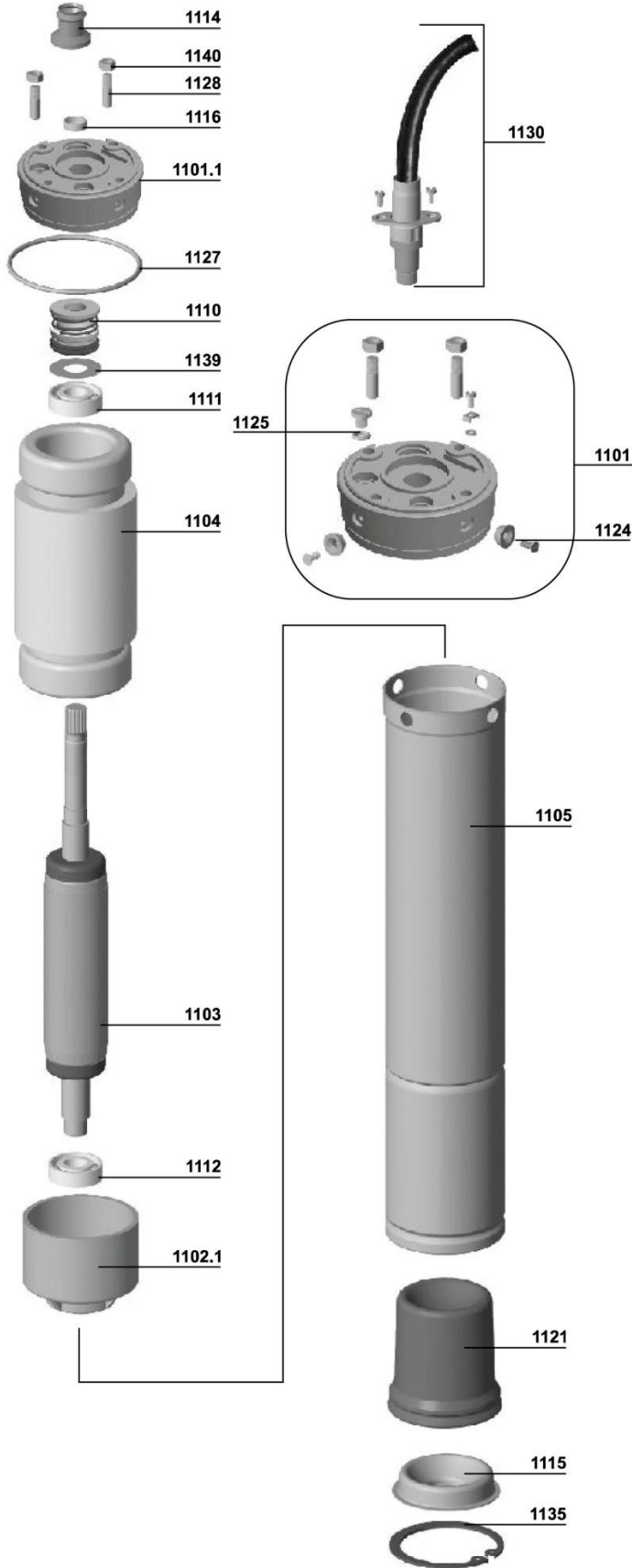
4 INCH/3 PHASE, 3 WIRE OIL FILLED MOTOR

Type	Pn		Un (Volts)	Hz	S.F	Thrust Load (N)	In	Istart/In	RPM	Eff. [%]	Cos φ (P.F)		TN (Nm)	(L) Length (in)	Gross weight (lbs.)
	[hp]	[kW]									F.L	F.L			
M4-005-230-3	0.50	0.37	230	60	1.6	1500	2.3	8.50	3450	58.0	0.71	1.03	15.0	22.8	
M4-005-460-3	0.50	0.37	460	60	1.6	1500	1.1	4.80	3450	59.0	0.72	1.03	15.0	22.8	
M4-007-230-3	0.75	0.55	230	60	1.5	1500	3.1	12.50	3440	62.0	0.72	1.52	15.8	23.2	
M4-007-460-3	0.75	0.55	460	60	1.5	1500	1.5	8.00	3440	64.0	0.72	1.52	15.8	23.2	
M4-010-230-3	1.00	0.75	230	60	1.4	1500	3.9	18.00	3440	67.0	0.72	2.07	16.4	25.2	
M4-010-460-3	1.00	0.75	460	60	1.4	1500	1.8	9.00	3440	70.0	0.73	2.07	16.4	25.2	
M4-015-230-3	1.50	1.10	230	60	1.3	1500	5.7	23.00	3440	67.0	0.72	3.05	17.0	26.7	
M4-015-460-3	1.50	1.10	460	60	1.3	1500	2.7	11.00	3450	72.0	0.72	3.05	17.0	26.7	
M4-020-230-3	2.00	1.50	230	60	1.25	1500	7.0	31.00	3450	73.0	0.74	4.15	18.6	30.2	
M4-020-460-3	2.00	1.50	460	60	1.25	1500	3.6	10.00	3430	73.0	0.72	4.16	18.6	30.2	
M4-030-230-3	3.00	2.20	230	60	1.15	1500	10.0	48.00	3420	75.0	0.74	6.09	20.2	34.2	
M4-030-460-3	3.00	2.20	460	60	1.15	1500	4.7	20.00	3430	75.0	0.78	6.09	20.2	34.2	
M4-050-230-3	5.00	3.70	230	60	1.15	2500	16.1	85.00	3430	76.0	0.76	10.5	24.5	47.8	
M4-050-460-3	5.00	3.70	460	60	1.15	2500	7.8	48.00	3450	76.0	0.78	10.5	24.5	47.8	
M4-075-230-3	7.50	5.50	230	60	1.15	4400	23.0	105.00	3430	78.0	0.77	15.3	28.0	56.6	
M4-075-460-3	7.50	5.50	460	60	1.15	4400	12.0	50.00	3440	77.0	0.75	15.3	28.0	56.6	
M4-100-460-3	10.00	7.50	460	60	1.15	4400	15.9	58.00	3430	77.0	0.77	21.2	32.0	69.6	

CABLE DATA

HP	ph	Type of start	Cable x Leads x Size (AWG)	Length [ft]	H x B [inch]	
0.5 - 5	1	DOL	1 x 4 x 12	6.0	0.24 x 0.71	
0.5 - 5	3	DOL	1 x 4 x 12	6.0	0.24 x 0.71	
7.5 - 10	3	DOL	1 x 4 x 12	6.0	0.24 x 0.71	





MATERIALS

PART NO.	PARTS NAME	MATERIAL
1101	UPPER BEARING HOUSING (COMPLETE)	-
1101.1	UPPER BEARING HOUSING	GREY IRON WITH CHROME PLATED
1102.1	LOWER BEARING HOUSING	GREY IRON
1103	ROTOR	ELECTRICAL STEEL
1104	STATOR	ELECTRICAL STEEL
1105	JACKET	STAINLESS STEEL
1110	MECHANICAL SEAL	CARBON / CERAMIC / NBR
1111	BEARING (UPPER)	STAINLESS STEEL
1112	BEARING (LOWER)	STAINLESS STEEL
1114	SAND GUARD	RUBBER
1115	DIAPHRAGM HOLDER CAP	STAINLESS STEEL
1116	SEAL COVER FOR SAND GUARD	STAINLESS STEEL
1121	DIAPHRAGM	RUBBER
1124	LOCKING WASHER WITH SCREW	STAINLESS STEEL
1125	OIL PLUG WITH 'O' RING	S.S. / RUBBER
1127	'O' RING	RUBBER
1128	COUPLE STUD	STAINLESS STEEL
1130	CABLE KIT WITH 3 MTRS. CABLE	-
1135	CIRCLIP	STAINLESS STEEL
1139	WRINKLE WASHER	SPRING STEEL
1140	NUT	STAINLESS STEEL

ORDERING NOTE:

While ordering spare parts kindly mention motor type, part no, part name, material & quantity in the order.